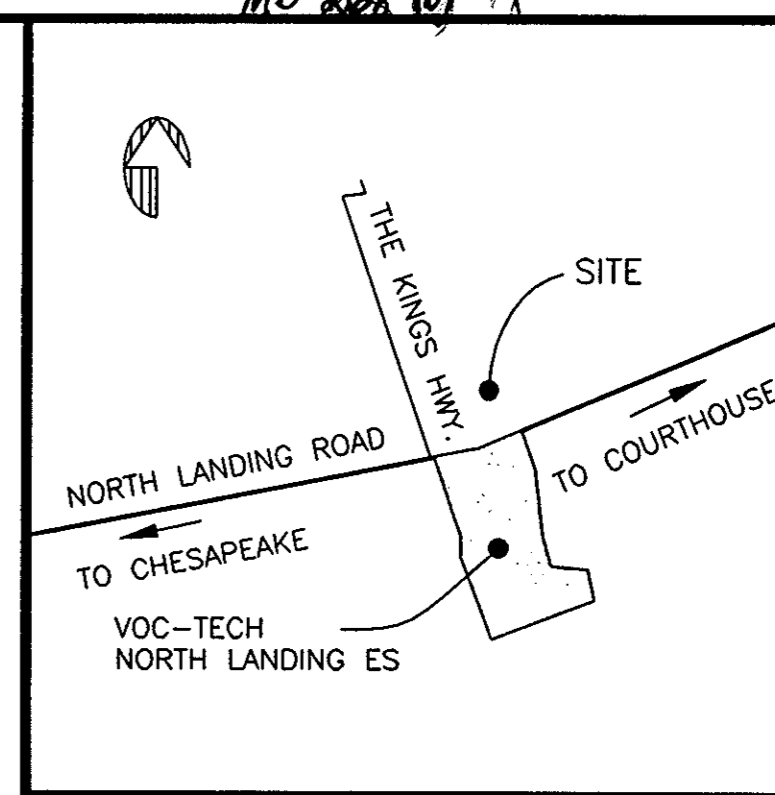
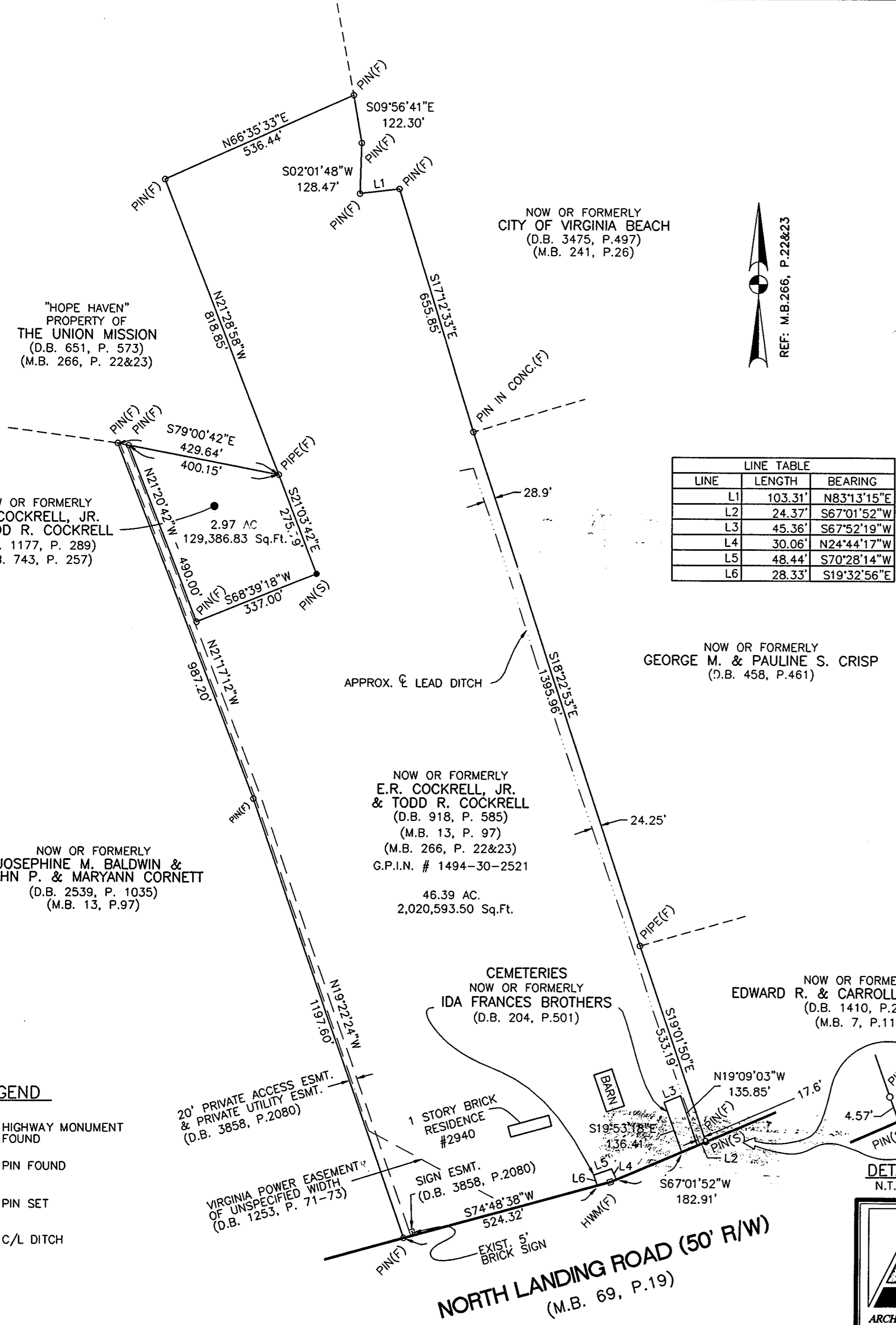


MB 266 (b) 74

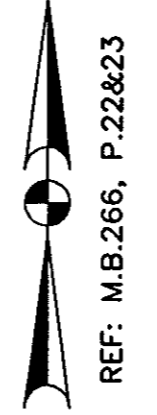


**LOCATION MAP**

SCALE: 1"=2000'



NOW OR FORMERLY  
CITY OF VIRGINIA BEACH  
(D.B. 3475, P.497)  
(M.B. 241, P.26)



LINE TABLE		
LINE	LENGTH	BEARING
L1	103.31'	N83°13'15"E
L2	24.37'	S67°01'52"W
L3	45.36'	S67°52'19"W
L4	30.06'	N24°44'17"W
L5	48.44'	S70°28'14"W
L6	28.33'	S19°32'56"E

"HOPE HAVEN"  
PROPERTY OF  
THE UNION MISSION  
(D.B. 651, P. 573)  
(M.B. 266, P. 22&23)

NOW OR FORMERLY  
E.R. COCKRELL, JR.  
& TODD R. COCKRELL  
(D.B. 1177, P. 289)  
(D.B. 743, P. 257)

NOW OR FORMERLY  
JOSEPHINE M. BALDWIN &  
JOHN P. & MARYANN CORNETT  
(D.B. 2539, P. 1035)  
(M.B. 13, P.97)

NOW OR FORMERLY  
E.R. COCKRELL, JR.  
& TODD R. COCKRELL  
(D.B. 918, P. 585)  
(M.B. 13, P. 97)  
(M.B. 266, P. 22&23)  
G.P.I.N. # 1494-30-2521

NOW OR FORMERLY  
GEORGE M. & PAULINE S. CRISP  
(D.B. 458, P.461)

CEMETERIES  
NOW OR FORMERLY  
IDA FRANCES BROTHERS  
(D.B. 204, P.501)

NOW OR FORMERLY  
EDWARD R. & CARROLL C. CARROLL  
(D.B. 1410, P.282)  
(M.B. 7, P.116)

**LEGEND**

- HIGHWAY MONUMENT FOUND
- PIN FOUND
- PIN SET
- C/L DITCH

**CERTIFICATION**

I, TERRY W. BRANCH, A LAND SURVEYOR, DO HEREBY CERTIFY THAT THIS SURVEY, TO THE BEST OF MY KNOWLEDGE AND BELIEF, IS CORRECT AND COMPLIES WITH THE MINIMUM PROCEDURES AND STANDARDS ESTABLISHED BY THE VIRGINIA STATE BOARD OF LAND SURVEYORS. THIS SURVEY IS NOT INTENDED TO SHOW ANY EASEMENTS OR IMPROVEMENTS THAT MAY AFFECT THE PROPERTY SHOWN HEREON EXCEPT WHERE OTHERWISE NOTED HEREON.

SIGNED: Terry W. Branch DATE: 7/6/98  
TERRY W. BRANCH LAND SURVEYOR, N° 1527



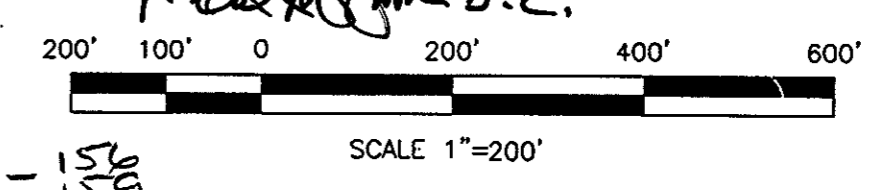
THIS PLAT DOES NOT CONSTITUTE A SUBDIVISION OF PROPERTY.  
APPROVED FOR RECORDATION:

Cheryl Stearns DATE: 7/9/98  
PLANNING DEPARTMENT - CITY OF VIRGINIA BEACH

VIRGINIA:  
IN THE CLERK'S OFFICE OF THE CIRCUIT COURT OF THE CITY OF VIRGINIA BEACH VIRGINIA, ON THE 9<sup>th</sup> DAY OF July, 1998, THIS PLAT WAS RECEIVED AND ADMITTED TO RECORD IN MAP BOOK 266, AT PAGE 74.

TESTE: J. CURTIS FRUIT, CLERK, CLERK

Certified to be a TRUE COPY of records in my custody.  
J. Curtis Fruit, Clerk  
Circuit Court, Virginia Beach, VA.



**THE TAF GROUP**  
ARCHITECTURE • ENGINEERING • CONSTRUCTION  
1081 19TH STREET, SUITE 200, VIRGINIA BEACH, VA 23451  
PHONE: (757) 422-9933 • FAX: (757) 422-3790

DRAWN BY: GMB	DATE: 5-22-98
DRAFT. CHK: IWR	DATE: 5-22-98
COMP. CHK.	DATE:
ENG. CHK.	DATE:
DEPT. HEAD: IWR	DATE: 5-22-98
PROJECT NO: 980500	
SCALE: 1"=200'	
FILE NO. 27-D-2	

BOUNDARY SURVEY  
OF  
**E.R. COCKRELL, Jr. &  
TODD R. COCKRELL**  
REF: D.B. 918, P. 585  
REF: D.B. 1177, P. 289  
REF: M.B. 266, P. 22&23  
REF: M.B. 13, P. 97  
PRINCESS ANNE BOROUGH VIRGINIA BEACH, VA.

709-156