

5' PEDESTRIAN ACCESS EASEMENT HEREBY DEDICATED TO THE CITY OF VIRGINIA BEACH, VIRGINIA. AREA = 2,295.24 SQ. FT. OR 0.0527 AC.

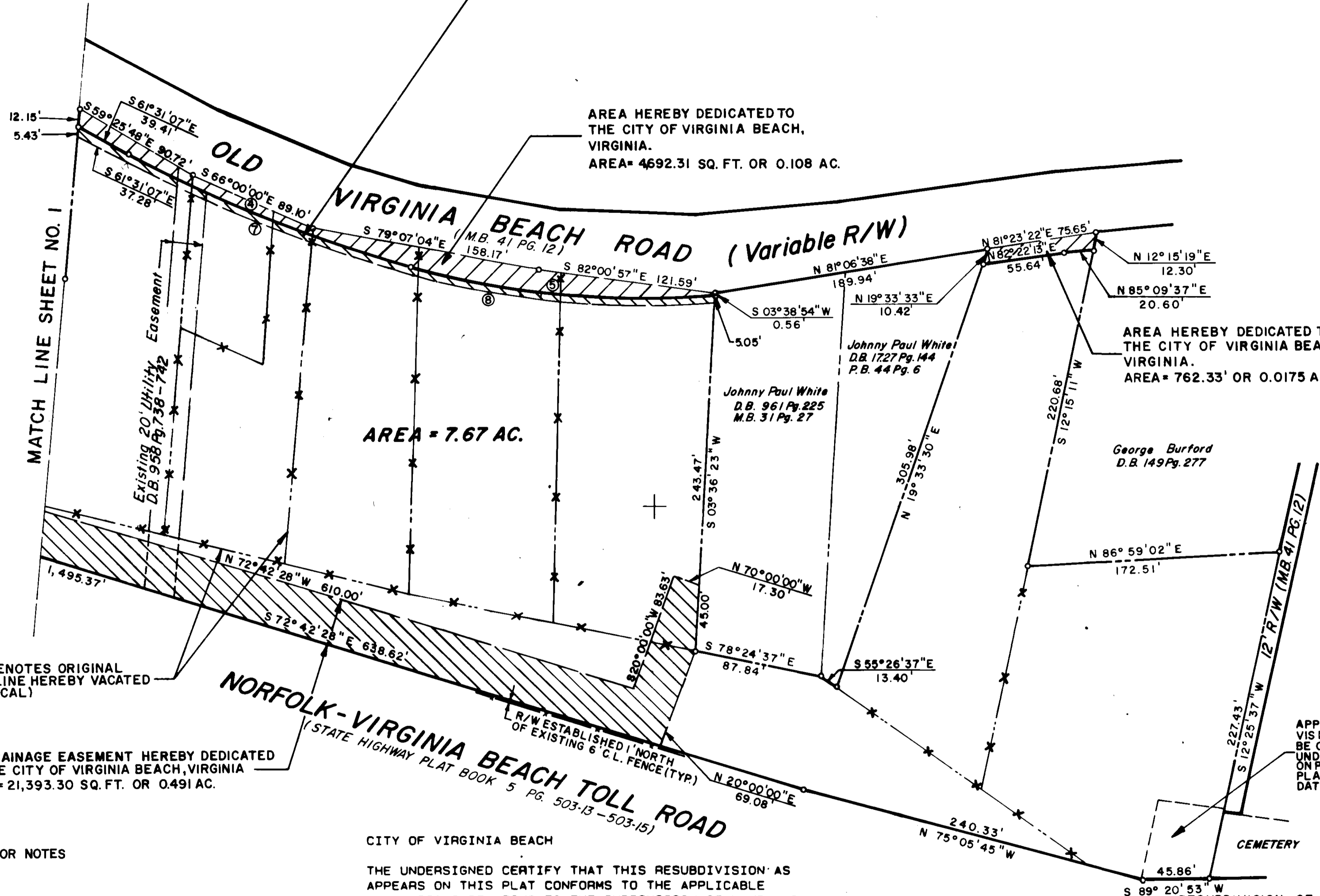
AREA HEREBY DEDICATED TO THE CITY OF VIRGINIA BEACH, VIRGINIA. AREA = 4692.31 SQ. FT. OR 0.108 AC.

AREA HEREBY DEDICATED TO THE CITY OF VIRGINIA BEACH, VIRGINIA. AREA = 762.33' OR 0.0175 AC.

AREA = 7.67 AC.

'X' DENOTES ORIGINAL LOT LINE HEREBY VACATED (TYPICAL)
30' DRAINAGE EASEMENT HEREBY DEDICATED TO THE CITY OF VIRGINIA BEACH, VIRGINIA AREA = 21,393.30 SQ. FT. OR 0.491 AC.

APPROXIMATE AREA OF VISIBLE GRAVES. THERE MAY BE OTHER GRAVES OF UNDETERMINED LOCATION ON PROPERTY. REFERENCE PLAT BY ENGINEERING SERVICES DATED: 12/21/84. (84388)



SEE SHEET 1 OF 3 FOR NOTES AND CERTIFICATIONS.

CITY OF VIRGINIA BEACH

THE UNDERSIGNED CERTIFY THAT THIS RESUBDIVISION AS APPEARS ON THIS PLAT CONFORMS TO THE APPLICABLE REGULATIONS RELATING TO THE SUBDIVISION OF LAND AND IS ACCORDINGLY APPROVED. BY SUCH APPROVAL THE UNDERSIGNED DO NOT CERTIFY AS TO THE CORRECTNESS OF THE BOUNDARY, STREETS OR OTHER LINES SHOWN ON THIS PLAT.

APPROVED: *Robert J. ...* DATE: 6-27-86 1986
DIRECTOR OF PLANNING CITY OF VIRGINIA BEACH

APPROVED: *Oral ...* DATE: 6-27-86 1986
DIRECTOR OF PUBLIC WORKS CITY OF VIRGINIA BEACH

RESUBDIVISION OF PROPERTY OWNED BY
BIRDNECK DEVELOPMENT PARTNERSHIP
LYNNHAVEN BOROUGH VIRGINIA BEACH, VIRGINIA
SCALE: 1" = 50'
DATE: JUNE 5, 1986.
MILLER-STEPHENSON & ASSOCIATES, P.C.

ENGINEERS SURVEYORS PLANNERS
204 GRAYSON ROAD VIRGINIA BEACH VA. 23462
(804-490-9264)



GRAPHIC SCALE
1" = 50'

VIRGINIA: IN THE CLERK'S OFFICE OF THE CIRCUIT COURT OF VIRGINIA BEACH, VIRGINIA ON THE 27 DAY OF June, 1986 THIS PLAT WAS RECEIVED AND ADMITTED AND RECORDED IN DEED BOOK AT PAGE

TESTE: *J. Curtis ...* CLERK