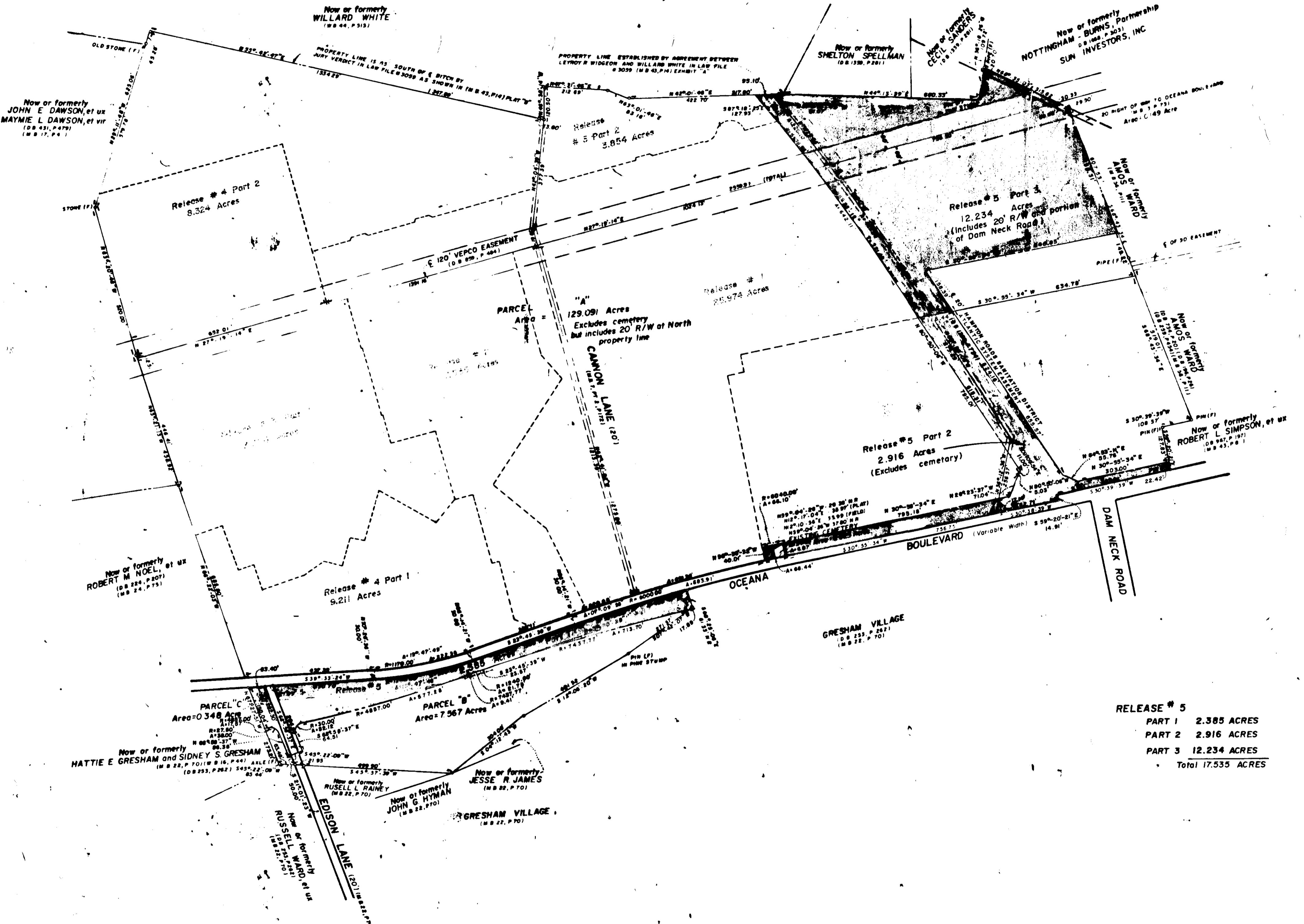


162-2
Claim Judge
Nov 22 10 05 AM '82

VALUED



RELEASE # 5

PART 1	2.385 ACRES
PART 2	2.916 ACRES
PART 3	12.234 ACRES
Total	17.535 ACRES

Note: This survey is not intended to show any physical improvements, or other utilities and/or drainage easements that may effect property shown hereon

Witness
In the Clerk's Office of the Circuit Court of Virginia Beach, Va.
Subscribed and sworn to before me on this 22nd day of November 1982.
I, J. Curtis Fruit, Clerk of the Court.

RELEASE PLAT
FOR
CANNON PROPERTIES
PRINCESS ANNE BOROUGH-VIRGINIA BEACH, VIRGINIA
Scale 1"=200' JUNE 4, 1982
BASGIER AND ASSOCIATES
A PROFESSIONAL CORPORATION
CONSULTING ENGINEERS-SURVEYORS-PLANNERS
VIRGINIA BEACH, VIRGINIA

0 100 200 400 600 800 FEET
0 10 20 30 100 METERS
GRAPHIC SCALES
REVISED: 10-20-82
FB. 770