

Book 100 29
 Plan 100
 Nov 3 3 05 PM '82
 in the Clerk's Office of the Circuit Court of Virginia Beach, Va.
 08th November 1982
 This Plat was received and admitted to record in Map Book 161 Page 29
 Tested by Justice Smith

CURVE DATA TABLE

NO	DELTA	RADIUS	LENGTH	TANGENT	CHORD	CHORD BEARING
1	29° 49' 02"	60.00'	31.22'	15.97'	30.89'	N 10° 35' 01" W
2	56° 46' 11"	225.00'	222.93'	121.59'	213.93'	S 83° 49' 32" W

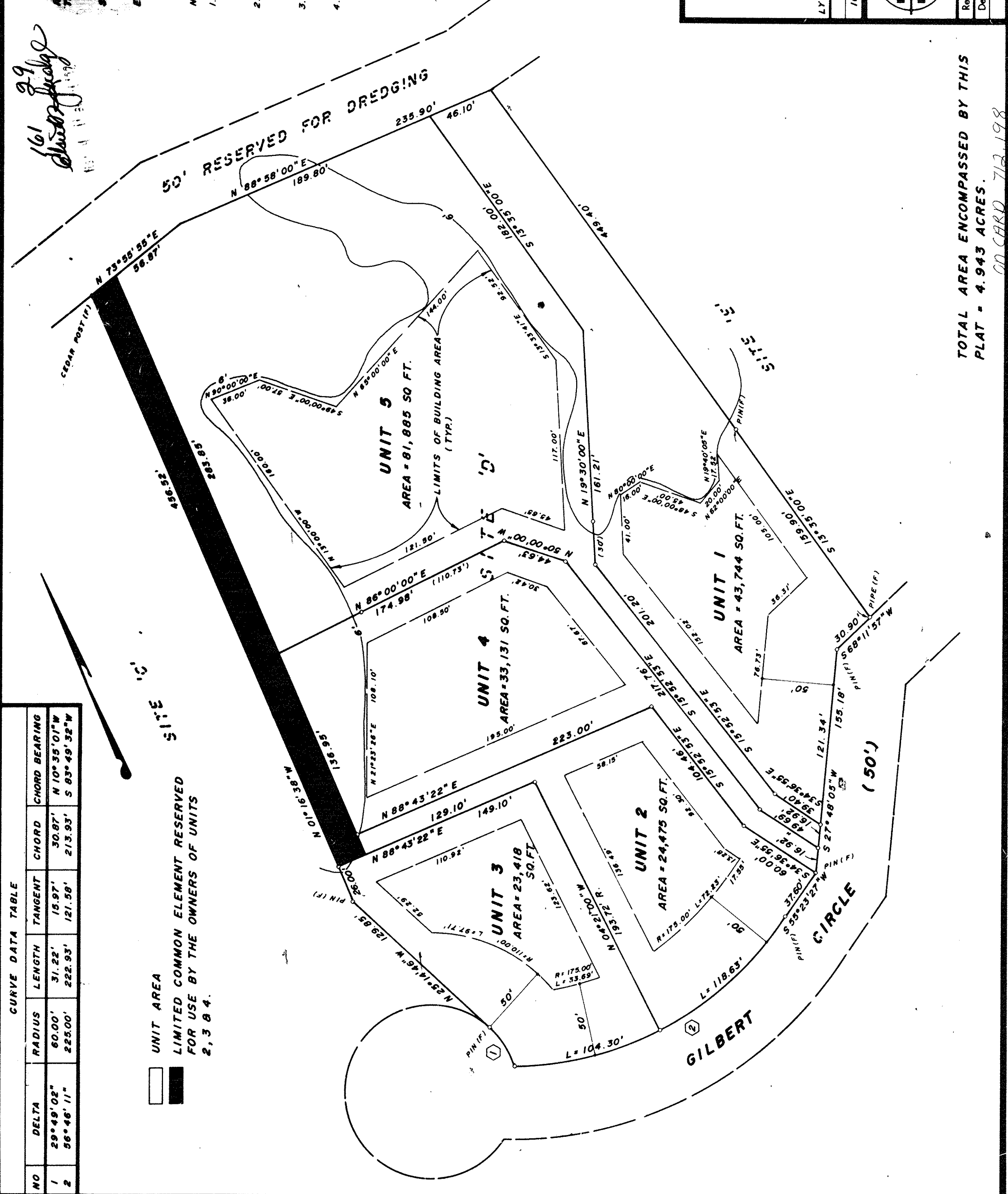
UNIT AREA
 LIMITED COMMON ELEMENT RESERVED
 FOR USE BY THE OWNERS OF UNITS
 2, 3 & 4.

99
 161
 11-18-82

WE HEREBY CERTIFY THAT THIS PLAT WAS PREPARED BY AND IS IN ACCORDANCE WITH THE CODE OF VIRGINIA.
 WE FURTHER CERTIFY THAT THIS PLAT SURVEY PERFORMED OCTOBER 20, 1982.
 ENGINEERING SERVICES, INC. BY [Signature]

- NOTES:
- UNITS NUMBERED 1 THRU 5 ARE FOR CONDOMINIUM PURPOSES ONLY AND ARE NOT TO BE CONSIDERED LOTS IN A SUBDIVISION.
 - MINIMUM DISTANCE BETWEEN UNIT BUILDING AREAS AND UNIT DIVIDING LINES IS 20' UNLESS OTHERWISE NOTED.
 - NO RESIDENTIAL STRUCTURES SHALL BE BUILT OUTSIDE BUILDING AREAS.
 - UNLESS OTHERWISE NOTED THE SYMBOL "C" INDICATES A PIN SET.

VIRGINIA
 IN THE CLERK'S OFFICE OF THE CIRCUIT COURT OF VIRGINIA BEACH, VIRGINIA ON THE 11th DAY OF NOVEMBER, 1982 THIS PLAT WAS RECEIVED AND ADMITTED TO RECORD IN MAP BOOK 161 AT PAGE 29
 Tested by Justice Smith



PLAT OF RIVER POINT FOREST CONDOMINIUM



LYNNHAVEN BOROUGH VIRGINIA BEACH, VA.
 Scale 1" = 50'
 Date 10-20-82
 engineering services inc
 Civil Engineering Land Surveying
 3351 Stoneshore Road Suite 100
 Virginia Beach Virginia 23452 (804) 468-8870
 M.B. 27, PG. 20
 Drawn DA
 Checked [Signature]
 Elected 2 Job Number 2069 Client Number 07317

TOTAL AREA ENCOMPASSED BY THIS PLAT = 4.943 ACRES.

ON CARD 718, 198
 82-069-320