

I, G. E. LANGLY, A LAND SURVEYOR, DO HEREBY CERTIFY THAT THE SOURCE OF TITLE FOR THESE SIGNED SURVEYS IS BY DEEDS DULY RECORDED IN THE CLERK'S OFFICE OF THE CIRCUIT COURT OF VIRGINIA BEACH, VIRGINIA IN B B 1856, PG 400 & B B 1864, PG 480 THAT THIS PLAT HAS BEEN CONSIDERED BY THE OWNERS, AND THAT THIS PLAT IS ENTIRELY WITHIN THE BOUNDARIES OF AND COVERED BY THE SPONSOR'S CONVEYANCE, AND THAT THIS PLAT IS ENTIRELY WITHIN THE BOUNDARIES OF AND COVERED BY THE SPONSOR'S SUBDIVISION REGULATIONS AS ACTUALLY IN PLACE AT POINTS MARKED THEREON AND THE INDICATIONS ARE CORRECTLY SHOWN.

THE PLATTING OR DEDICATION OF THE PROPERTY SHOWN ON THIS PLAT IS WITH THE FREE CONSENT AND IN ACCORDANCE WITH THE DESIRES OF THE UNDERSIGNED OFFICERS, WHO CERTIFY THAT THERE ARE NO UNRECORDED ENCUMBRANCES OR INTERESTS IN THE PROPERTY, AND THAT THE BOUNDARIES OF THE STRIPS (IF ANY) ARE OF THE WIDTH AND EXTENT SHOWN ON THIS PLAT. ALL EASEMENTS ARE SUBJECT TO THE RIGHTS OF THE CITY OF VIRGINIA BEACH, VIRGINIA AND ARE FOR SURFACE OR UNDERGROUND DRAINAGE AND UNDERGROUND OR OVERHEAD UTILITIES.

THE UNDERSIGNED CERTIFIES THAT THIS DEDICATION AND SUBDIVISION AS IT APPEARS ON THIS PLAT CONFORMS TO THE APPLICABLE REGULATIONS RELATIVE TO THE SUBDIVISION OF LAND AND IS ACCORDINGLY APPROVED BY SUCH APPROVAL THE UNDERSIGNED DOES NOT CERTIFY TO THE CORRECTNESS OF THE BOUNDARY, STREET OR OTHER LINES.

IN THE CLERK'S OFFICE OF THE CIRCUIT COURT OF THE CITY OF VIRGINIA BEACH, VA. ON THE 19th DAY OF NOVEMBER 1979 THIS PLAT WAS RECEIVED AND ADMITTED TO RECORD IN MAP BOOK 137 AT PG 24.

GEORGE E. LANGLY DATE

SIGNED: ALFRED W. CRAFT, JR. CHAIRMAN DATE: 11-16-79

11-9-79 C. Orval Lambie DIRECTOR OF PUBLIC WORKS
11-8-79 Robert G. Smith DIRECTOR OF PLANNING

TESTE: John V. Sautter, CLERK

SIGNED: George A. Woody, Jr. SECRETARY DATE: 11-16-79

STATE OF VIRGINIA TO WIT:

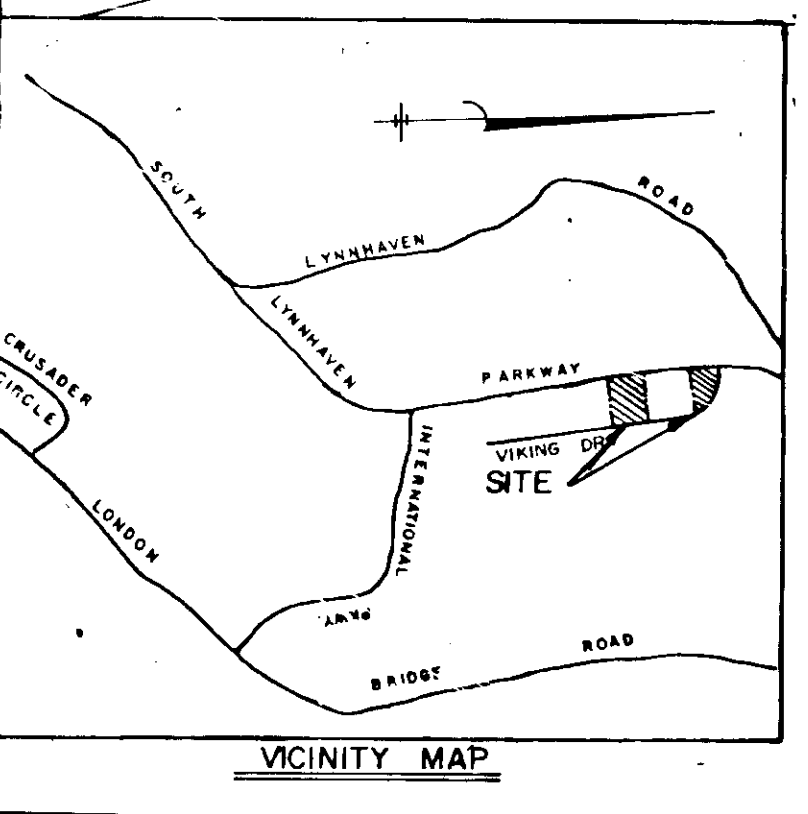
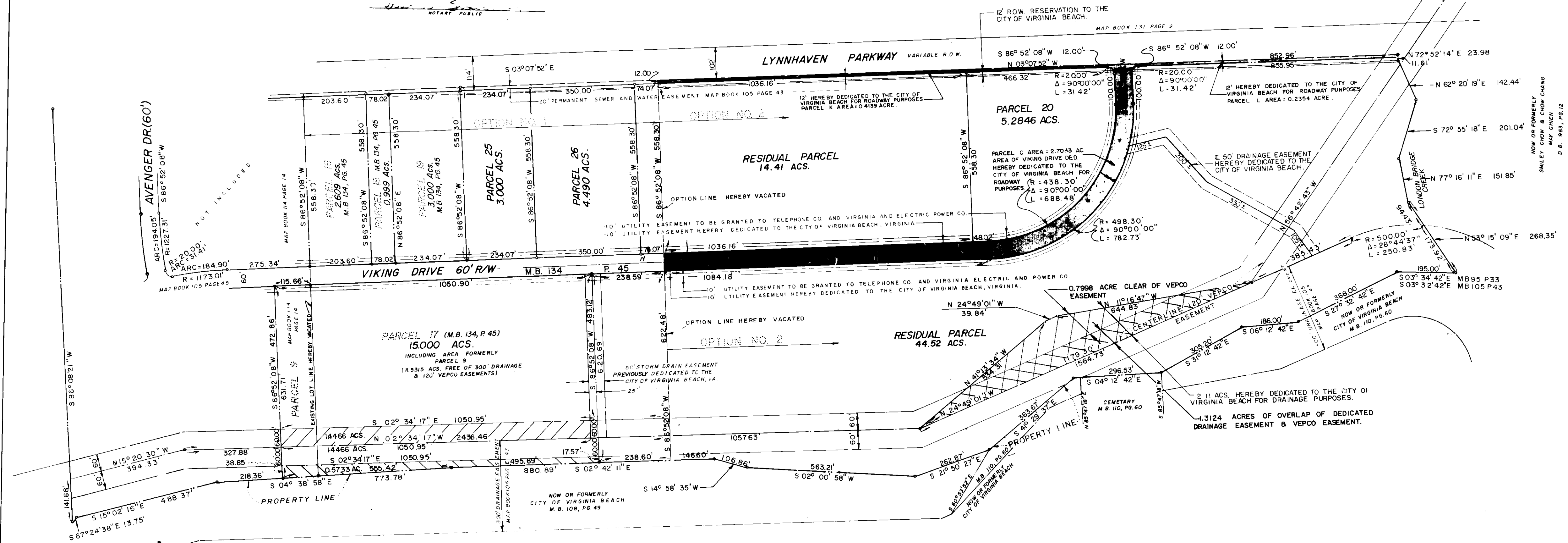
FOR THE CITY AND STATE AFORESAID, DO HEREBY CERTIFY AND THAT THE PERSON(S) WHOSE NAMES(S) IS/ARE MENTIONED TO THE ABOVE WRITING BEARING DATE ON THIS DAY HAVE, ACCORDING TO THE STATE AFORESAID, DONE THE SAME BEFORE ME IN MY CITY AND STATE AFORESAID.

GIVEN UNTO MY HAND THIS DAY OF 11 1979 BY COMMISSION EXPIRES 11-19-82

NOTARY PUBLIC

THE PROPERTY ENBRACED WITHIN THE BOUNDARIES OF LAND SHOWN ON THIS PLAT WAS CONVEYED TO THE CITY OF VIRGINIA BEACH DEVELOPMENT AUTHORITY BY DEEDS DULY RECORDED IN THE CLERK'S OFFICE OF THE CIRCUIT COURT OF THE CITY OF VIRGINIA BEACH, VIRGINIA IN DB 1856 P 400 AND DB 1864, PG 480.

A FIVE (5) FOOT NO. INGRESS-EGRESS EASEMENT ALONG LYNNHAVEN PARKWAY FOR PARCELS 20, 25, 26 & RESIDUAL PARCEL (1.131 ACRES) IS HEREBY DEDICATED TO THE CITY OF VIRGINIA BEACH, VIRGINIA. A RESIDUAL PARCEL OF 13.2795 ACRES.



PLAT OF
PORTION OF
VIKING DRIVE RIGHT OF WAY DEDICATION
AND
PARCELS 20, 25 & 26
BEING A SUBDIVISION OF PROPERTY OF
THE CITY OF VIRGINIA BEACH
DEVELOPMENT AUTHORITY
OCEANA WEST INDUSTRIAL PARK
LYNNHAVEN BOROUGH VIRGINIA BEACH, VA.
OCTOBER 19, 1979
SCALE: 1"=200'

LANGLEY AND Mc DONALD ENGINEERS - SURVEYORS - PLANNERS VIRGINIA BEACH, VA. REVISED: NOV. 7, 1979