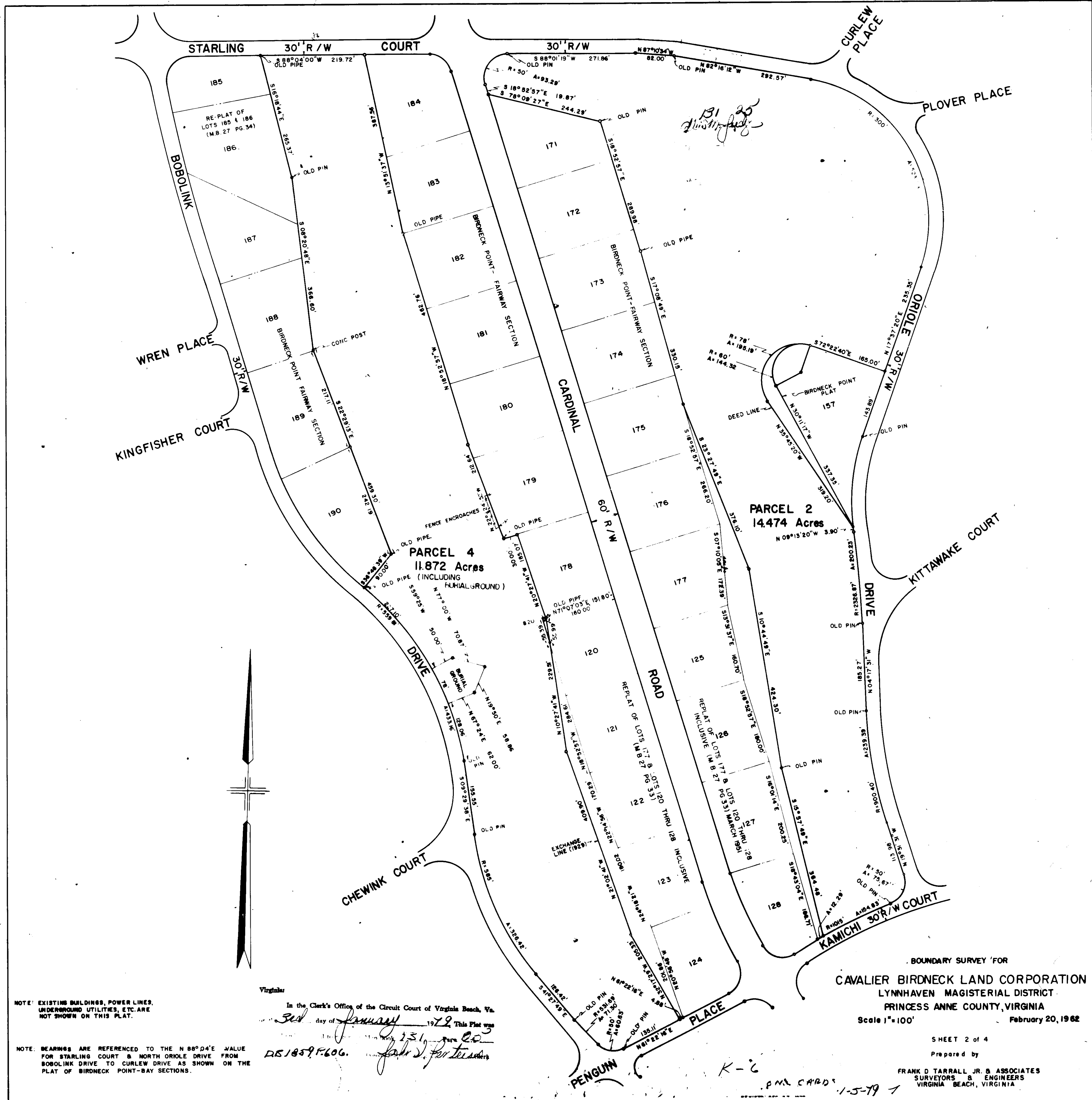


1859-60 MB131225



NOTE: EXISTING BUILDINGS, POWER LINES, UNDERGROUND UTILITIES, ETC. ARE NOT SHOWN ON THIS PLAT.

NOTE: BEARINGS ARE REFERENCED TO THE N 88° 04' E VALUE FOR STARLING COURT & NORTH ORIOLE DRIVE FROM BOBOLINK DRIVE TO CURLEW DRIVE AS SHOWN ON THE PLAT OF BIRDNECK POINT-BAY SECTIONS.

Virginia
 In the Clerk's Office of the Circuit Court of Virginia Beach, Va.
 day of January 1972 This Plat was
 signed by John S. Farr for Surveyor
 DS 1859-606.

BOUNDARY SURVEY FOR
 CAVALIER BIRDNECK LAND CORPORATION
 LYNNHAVEN MAGISTERIAL DISTRICT
 PRINCESS ANNE COUNTY, VIRGINIA
 Scale 1"=100' February 20, 1962

SHEET 2 of 4
 Prepared by

FRANK D. TARRALL, JR. & ASSOCIATES
 SURVEYORS & ENGINEERS
 VIRGINIA BEACH, VIRGINIA

K-2
 P.M. CARD 1-5-79