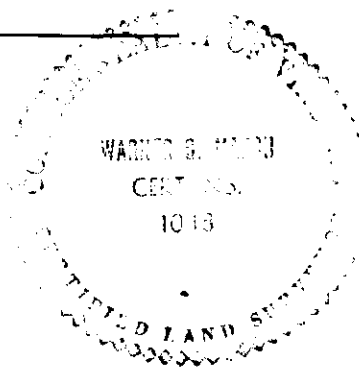


I, Warner G. Marsh, a certified land surveyor, do hereby certify that this plat was made by me, the undersigned, at the direction of the owner and that this subdivision is entirely within the boundaries of land covered by deeds described below and that steel pins as specified by the subdivision regulations of the City of Virginia Beach, Virginia, are actually in place at points marked thus "o", and that their locations are correctly shown.

Signed: *Warner G. Marsh*
Warner G. Marsh, Va. No. 1048



The property embraced within the limits of this subdivision was conveyed to Chapel Hill Builders from Bernard Kroll, Rhoda Kroll, Albert Kroll, Leonora Kroll and Ruth Cohen by deed dated May 19, 1970 and recorded in Deed Book 1171 Page 195 on August 21, 1970 in the Clerk's Office of the Circuit Court of Virginia Beach.

This Subdivision of Scarborough Square, Section Two located in Princess Anne Borough, Virginia Beach, Virginia is with free consent and in accordance with the desire of the undersigned owners and trustees, who certify that they are the fee simple owners of said land, and that there is an encumbrance on this property. The dedication of streets and easements is of the width and extent shown on this plat. All easements are subject to the rights of the City of Virginia Beach, Virginia and are for surface and underground drainage and underground and overhead utilities.

Witness the following signatures this 25 day of JANUARY 1974

CHAPEL HILL BUILDERS ENTERPRISES, OWNED BY SPOKE REALTY CORPORATION

Signed: *Bernard Kroll*
Bernard Kroll, President

Signed: *Rhoda Kroll*
Rhoda Kroll, Secretary

Signed: *Albert Kroll*
Albert Kroll, President

Signed: *Leonora Kroll*
Leonora Kroll, Secretary

Signed: *Ruth Cohen*
Ruth Cohen, President

Signed: *Joseph F. Madden*
Joseph F. Madden, Trustee

Signed: *William L. Rueger*
William L. Rueger, Trustee

STATE OF VIRGINIA
CITY OF VIRGINIA BEACH

I, Sharon M. DeBernard Notary Public, in and for the City and State aforesaid, do hereby certify that Bernard Kroll, President and Rhoda Kroll, Secretary of Spoke Realty Corporation and Albert Kroll, President and Leonora Kroll, Secretary of Wheel Realty Corporation and Ruth Cohen, President and Bernard Kroll, Secretary of Pico Realty Corporation and Joseph F. Madden and William L. Rueger, Trustees whose names are signed to the foregoing writing, bearing date on this 25 day of JANUARY, 1974, have acknowledged the same before me in my City and State aforesaid.

Given under my hand this 25 day of JANUARY, 1974

Sharon M. DeBernard
NOTARY PUBLIC

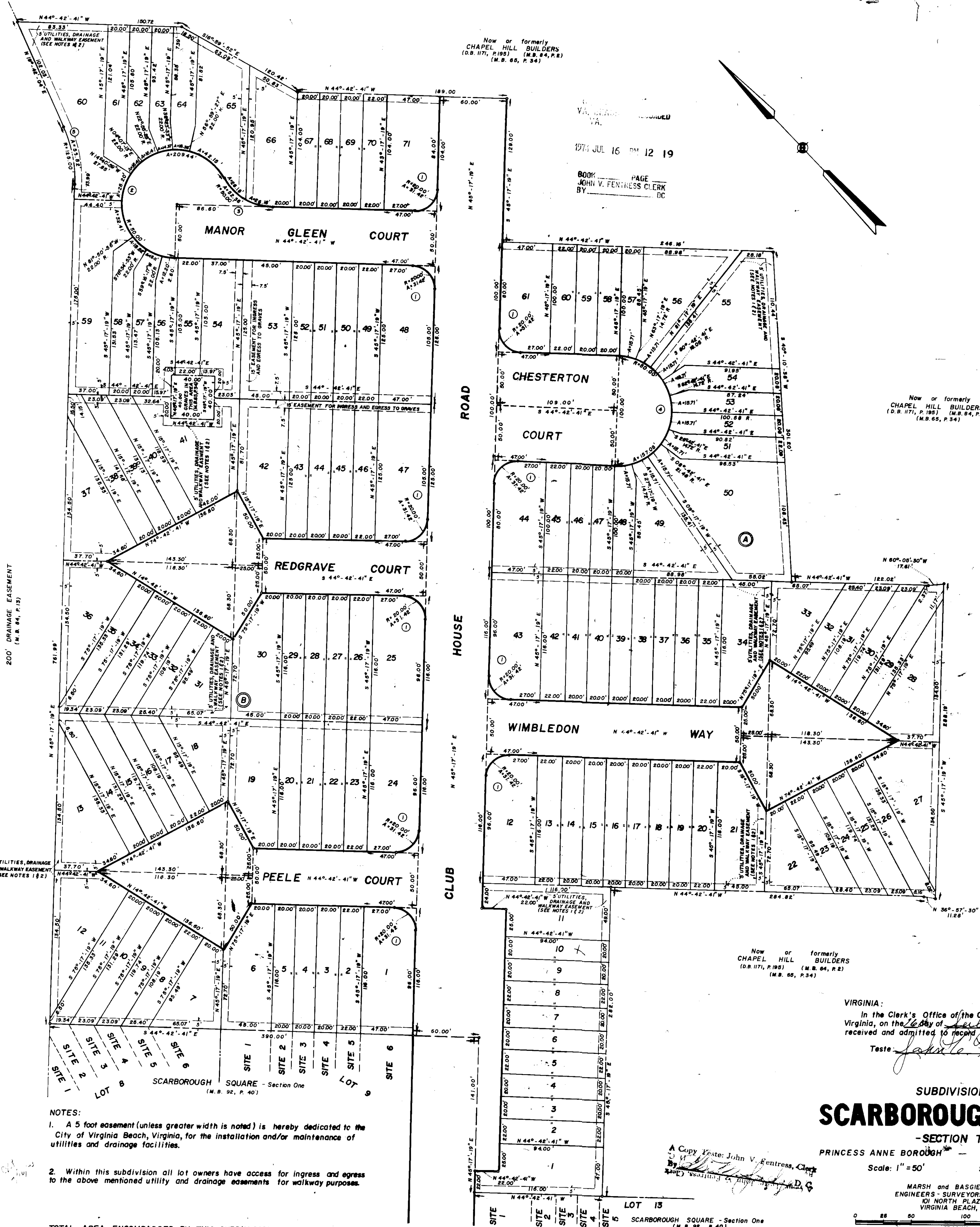
My commission expires: July 27, 1976

The undersigned certify that the subdivision as it appears on this plat conforms to the applicable regulations relating to the subdivision of land and is accordingly approved.

By such approval, the undersigned, do not certify as to the correctness of the boundary, street or other lines shown on this plat.

Approved: *[Signature]* Date: 7-16-74
Planning Director, City of Virginia Beach, Virginia

Approved: *[Signature]* Date: 7/16/74
Director of Community Services, City of Virginia Beach, Virginia



NOTES:

- A 5 foot easement (unless greater width is noted) is hereby dedicated to the City of Virginia Beach, Virginia, for the installation and/or maintenance of utilities and drainage facilities.
- Within this subdivision all lot owners have access for ingress and egress to the above mentioned utility and drainage easements for walkway purposes.

TOTAL AREA ENCOMPASSED BY THIS SUBDIVISION = 13.102 ACRES

Now or formerly
CHAPEL HILL BUILDERS
(D.B. 1171, P. 195) (M.B. 84, P. 2)
(M.B. 65, P. 34)

BOOK: _____ PAGE: _____
BY: JOHN V. FENTRESS, CLERK
DC

1974 JUL 16 AM 12 19

Now or formerly
CHAPEL HILL BUILDERS
(D.B. 1171, P. 195) (M.B. 84, P. 2)
(M.B. 65, P. 34)

VIRGINIA:
In the Clerk's Office of the Circuit Court of Virginia Beach,
Virginia, on the 25 day of July, 1974, this plat was
received and admitted to record in map book 125 at page 7-3
Teste: *John V. Fentress* Clerk

SUBDIVISION OF
SCARBOROUGH SQUARE
-SECTION TWO-
PRINCESS ANNE BOROUGH - VIRGINIA BEACH, VIRGINIA
Scale: 1" = 50'
September 1973

MARSH and BASGIER, INC. P.C.
ENGINEERS - SURVEYORS - PLANNERS
101 NORTH PLAZA TRAIL
VIRGINIA BEACH, VIRGINIA

GRAPHIC SCALE
0 50 100 150 200 FEET

CURVE TABLE			
CH. RADIUS	DELTA	TANGENT	ARC
1. 20.00'	80°-00'-00"	20.00'	31.42'
2. 30.00'	60°-00'-00"	30.00'	208.44'
3. 40.00'	40°-00'-00"	40.00'	82.36'
4. 50.00'	20°-00'-00"	50.00'	157.08'
5. 125.00'	20°-30'-15"	25.36'	66.82'