

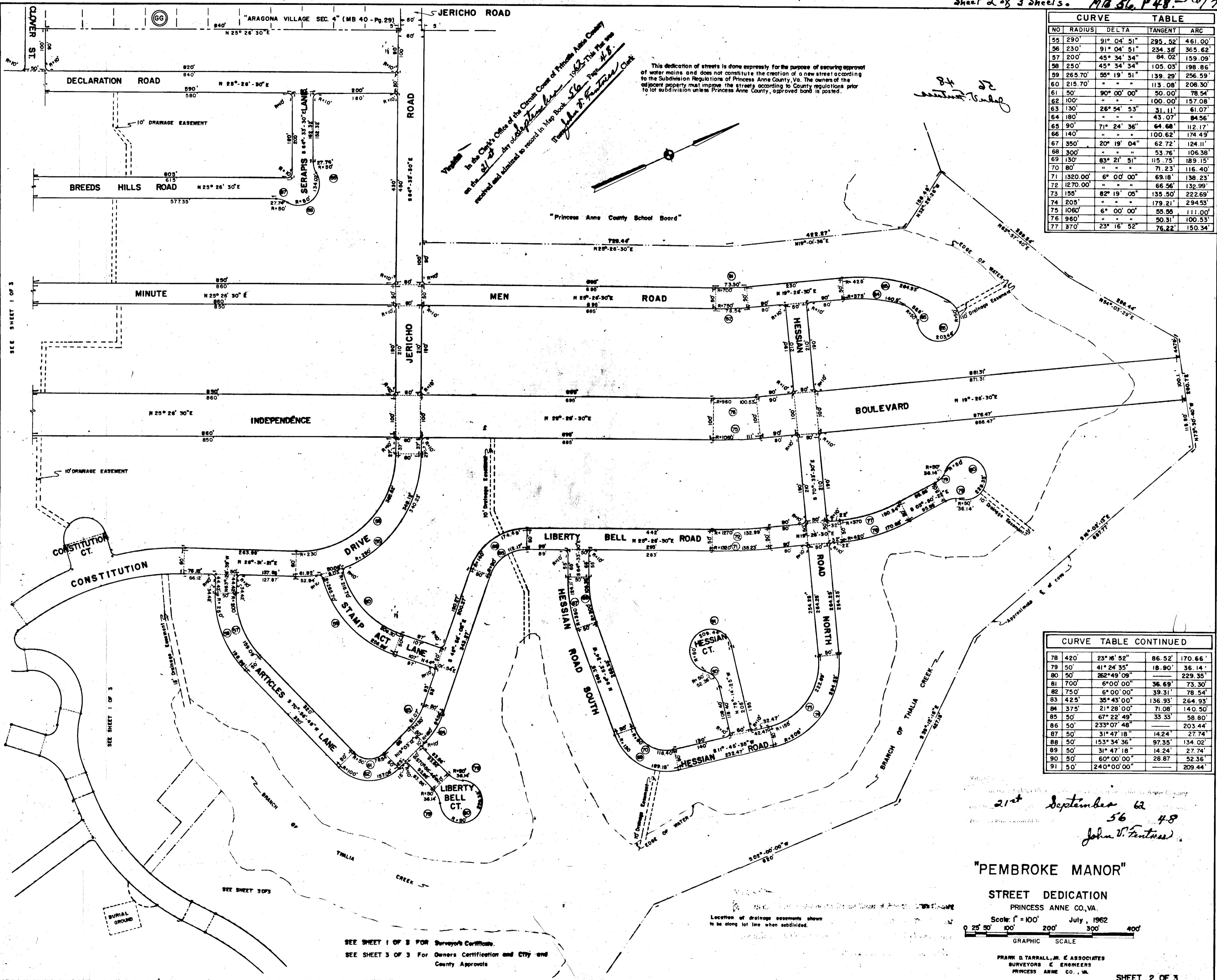
CURVE TABLE				
NO	RADIUS	DELTA	TANGENT	ARC
55	290'	91° 04' 51"	295.52'	461.00'
56	230'	91° 04' 51"	234.38'	365.62'
57	200'	45° 34' 34"	84.02'	159.09'
58	250'	45° 34' 34"	105.03'	198.86'
59	265.70'	55° 19' 51"	139.29'	256.59'
60	215.70'	" "	113.08'	208.30'
61	50'	90° 00' 00"	50.00'	78.54'
62	100'	" "	100.00'	157.08'
63	130'	26° 54' 53"	31.11'	61.07'
64	180'	" "	43.07'	84.56'
65	90'	71° 24' 36"	64.68'	112.17'
66	140'	" "	100.62'	174.49'
67	350'	20° 19' 04"	62.72'	124.11'
68	300'	" "	53.76'	106.38'
69	130'	83° 21' 51"	115.75'	189.15'
70	80'	" "	71.23'	116.40'
71	1320.00'	6° 00' 00"	69.18'	138.23'
72	1270.00'	" "	66.56'	132.99'
73	155'	82° 19' 05"	135.50'	222.69'
74	205'	" "	179.21'	294.53'
75	1060'	6° 00' 00"	55.55'	111.00'
76	960'	" "	50.31'	100.53'
77	370'	23° 16' 52"	76.22'	150.34'

Variable
 In the Clerk's Office of the Circuit Court of Princess Anne County
 on the 21st day of September 1962. This Plan was
 received and admitted to record in Map Book 56, Page 48.
 John V. Ferriss, Clerk

This dedication of streets is done expressly for the purpose of securing approval of water mains and does not constitute the creation of a new street according to the Subdivision Regulations of Princess Anne County, Va. The owners of the adjacent property must improve the streets according to County regulations prior to lot subdivision unless Princess Anne County, approved bond is posted.

84
 82
 J. V. Ferriss

"Princess Anne County School Board"



CURVE TABLE CONTINUED				
78	420'	23° 16' 52"	86.52'	170.66'
79	50'	41° 24' 35"	18.90'	36.14'
80	50'	262° 49' 09"	---	229.35'
81	700'	6° 00' 00"	36.69'	73.30'
82	750'	6° 00' 00"	39.31'	78.54'
83	425'	35° 43' 00"	136.93'	264.93'
84	375'	21° 28' 00"	71.08'	140.50'
85	50'	67° 22' 49"	33.33'	58.80'
86	50'	233° 07' 48"	---	203.44'
87	50'	31° 47' 18"	14.24'	27.74'
88	50'	153° 34' 36"	97.35'	134.02'
89	50'	31° 47' 18"	14.24'	27.74'
90	50'	60° 00' 00"	26.87'	52.36'
91	50'	240° 00' 00"	---	209.44'

21st September 62
 56 48
 John V. Ferriss

"PEMBROKE MANOR"

STREET DEDICATION
 PRINCESS ANNE CO., VA.

Scale: 1" = 100' July, 1962
 GRAPHIC SCALE

FRANK D. TARRALL, JR. & ASSOCIATES
 SURVEYORS & ENGINEERS
 PRINCESS ANNE CO., VA.

SEE SHEET 1 OF 3 FOR Surveyor's Certificate.
 SEE SHEET 3 OF 3 For Owners Certification and City and County Approvals

Location of drainage easements shown to be along lot line when subdivided.