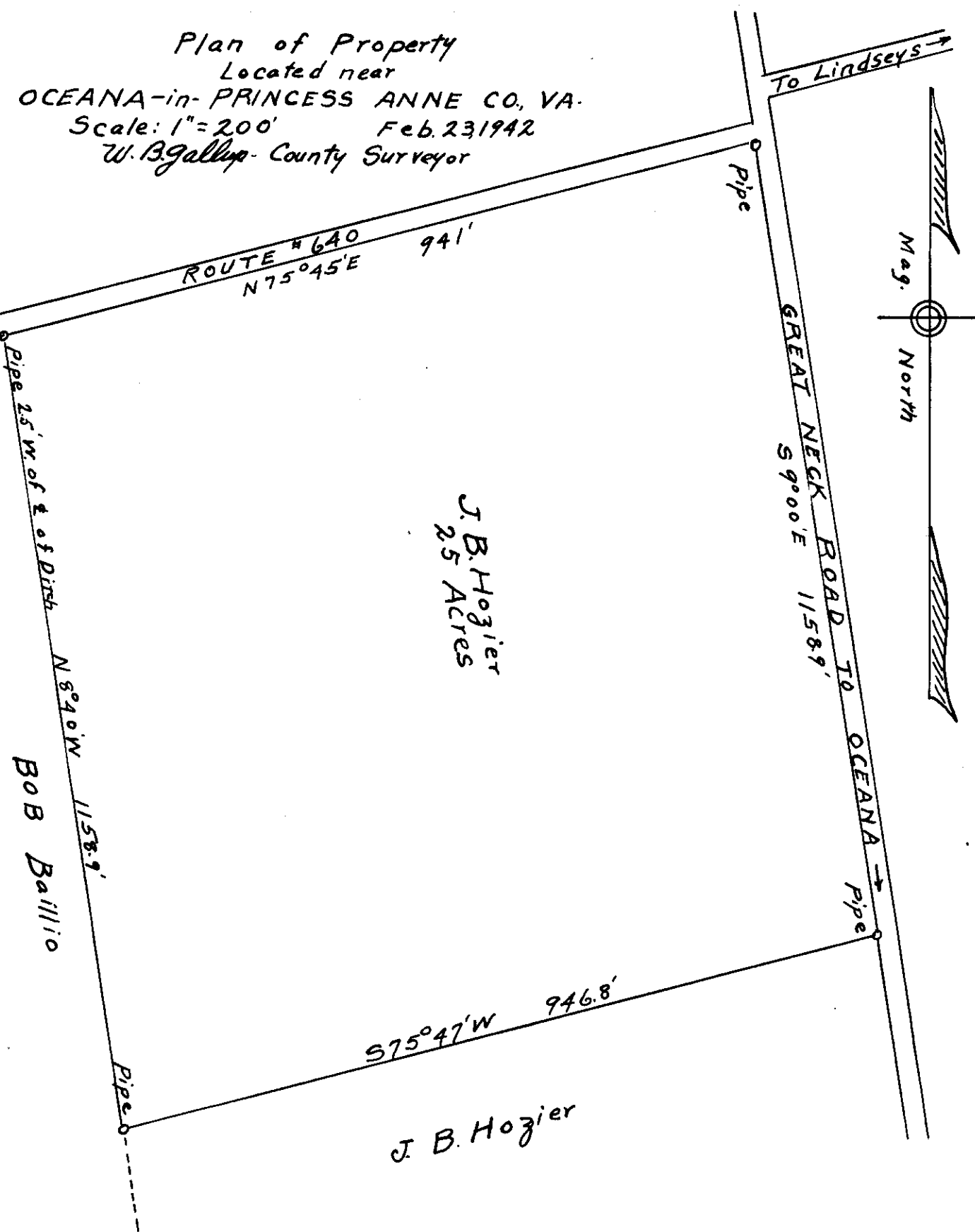
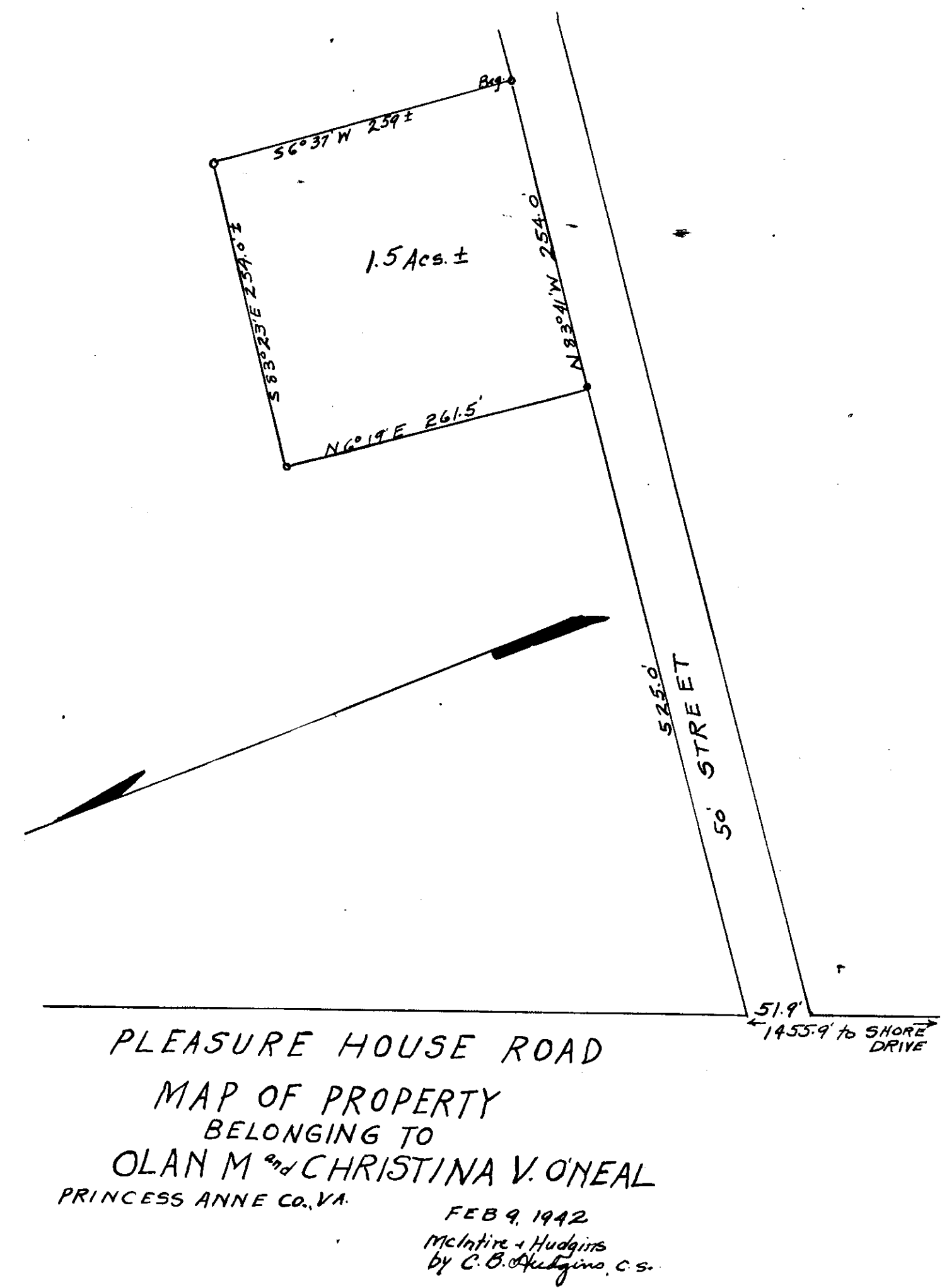


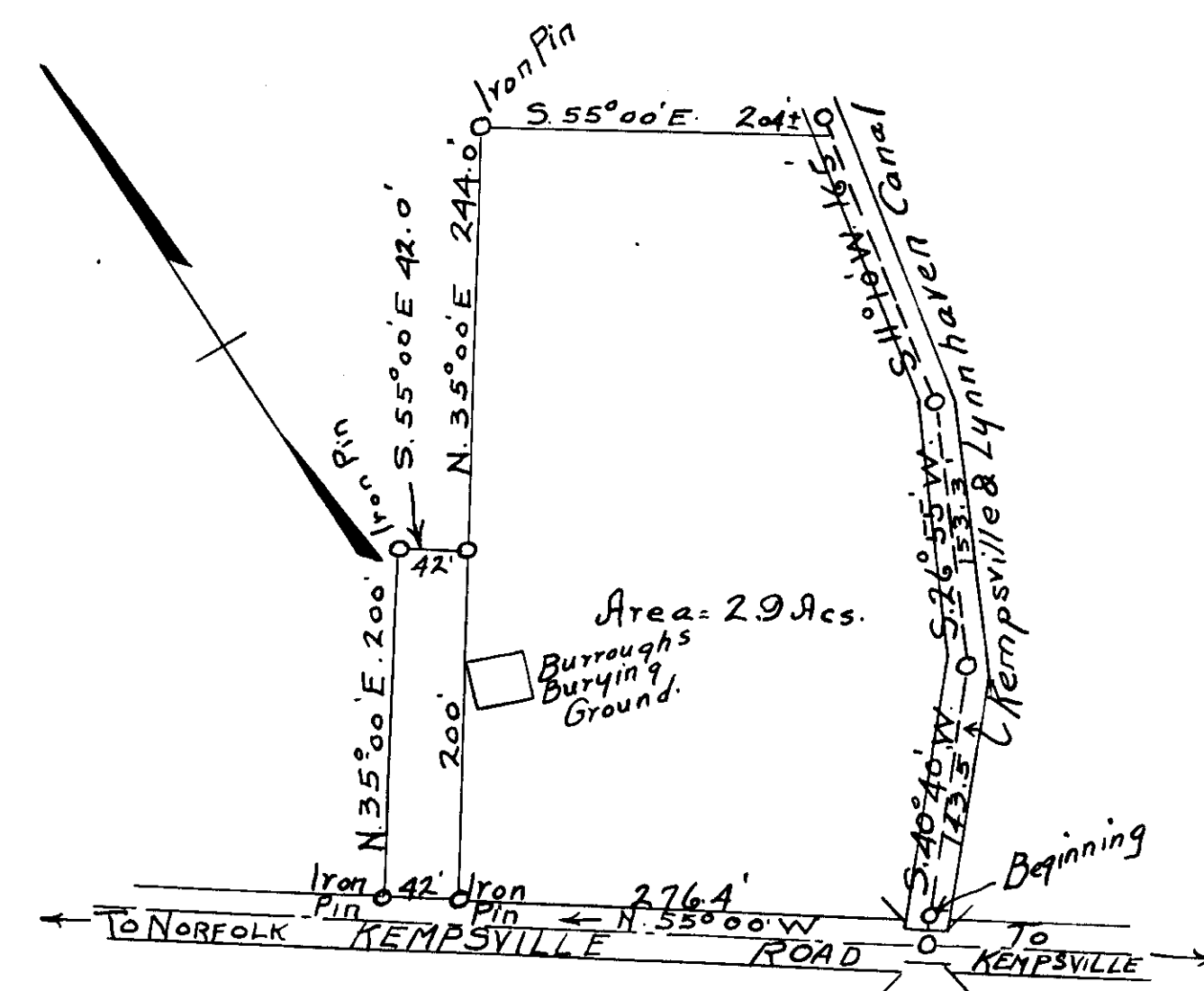
Virginia:
 In the clerk's office of the Circuit Court of Princess Anne County
 on the 20th day of Feb. 1942. This Plat was
 received with deed recorded in D. B. 210 Page 252 and
 admitted to record.
 Test: William F. Hudgins Clerk



Virginia:
 In the clerk's office of the Circuit Court of Princess Anne County
 on the 2nd day of March 1942. This Plat was
 received with deed recorded in D. B. 210 Page 392 and
 admitted to record.
 Test: William F. Hudgins Clerk



Virginia:
 In the clerk's office of the Circuit Court of Princess Anne County
 on the 19th day of Feb. 1942. This Plat was
 received with deed recorded in D. B. 210 Page 334 and
 admitted to record.
 Test: William F. Hudgins Clerk



SURVEY
 MADE FOR
 STANLEY W. MCCOY
 ON
 NORTH SIDE OF KEMPVILLE RD
 SCALE 1" = 100'
 PRINCESS ANNE CO., VA. JULY 28, 1941
 C. R. MCINTIRE, ENG.
 Note: Courses on this map taken from map
 made by J. G. Moore, Co. Surveyor, Apr. 30, 1913

Virginia:
 In the clerk's office of the Circuit Court of Princess Anne County
 on the 12th day of Feb. 1942. This Plat was
 received with deed recorded in D. B. 210 Page 314 and
 admitted to record.
 Test: William F. Hudgins Clerk

13 65